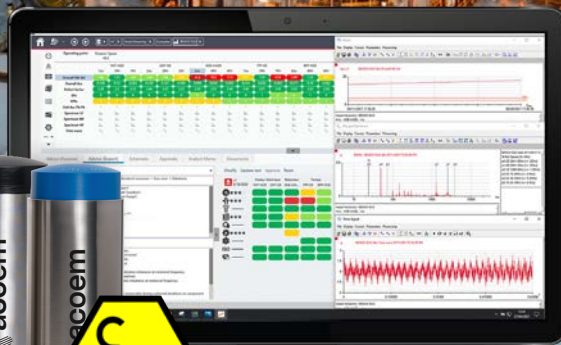
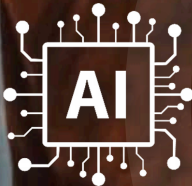


# EAGLE

WIRELESS DIAGNOSTIC  
SOLUTION FOR CRITICAL ASSETS



Powered by



# Unmatched Smart Wireless Diagnostics

Experience the freedom to optimize operations, reduce downtime, and elevate overall asset management efficiency. Stay connected, stay in control, and unlock the true potential of wireless diagnostic performance with Acoem Eagle.

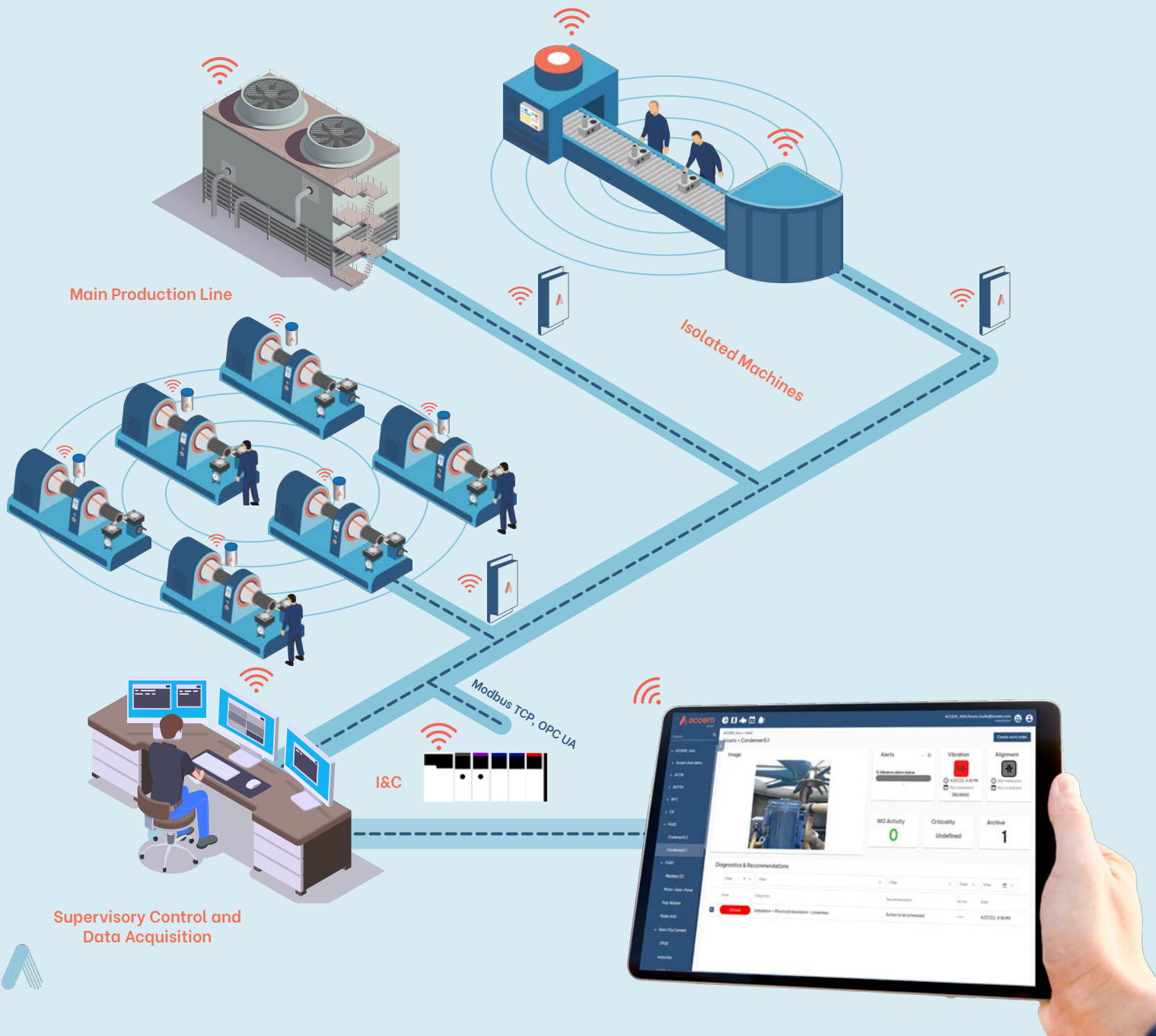
Acoem Eagle's revolutionary wireless remote diagnostic solution is a true game-changer that safeguards crucial components of your rotating machinery, this cutting-edge technology efficiently detects faults, including bearing and gear defects, ensuring seamless operations and preventing costly setbacks for your business.

One of the key advantage of Acoem Eagle is its all-inclusive data provision. With comprehensive data at your fingertips, there's no need to send personnel on-site for additional measurements when an alarm is triggered. Acoem Eagle empowers you to conduct remote diagnostics effortlessly, right from where you are. **Save time, resources, and minimize downtime with the power of Acoem Eagle's wireless remote diagnostic solution.**

# Experience the Power of Eagle

Acoem Eagle is an easy-to-deploy smart wireless diagnostic solution. It offers outstanding performance, ensuring optimal process reliability with minimal maintenance costs. Say goodbye to the need for frequent sensor replacements and embrace cost-effectiveness as you merely replace the battery, rejuvenating your sensor's power and extending its service life.

Eagle offers a future-proof solution that not only saves resources but also enables uninterrupted monitoring, providing peace of mind, and knowing your assets are protected for the long haul.



## Monitor critical machinery

- Advanced signal processing calculates key indicators and performs envelope FFT locally
- Utilize trend analysis to make informed maintenance decisions and optimize machinery efficiency.

## Unmatched diagnostic capabilities

- 1 or 3 vibration axes + temperature monitoring
- Collect multiple FFTs for up to 20kHz analysis, ensuring comprehensive data collection
- Perform measurements on alarms based on edge computed indicators, providing real-time insights
- Monitor machines starting from 100 RPM, enabling early fault detection and proactive maintenance
- Access advanced indicators and professional analysis tools within the NESTi4.0 software platform.

## Harsh environment champion

- Designed to meet industry requirements
- Sensor and Expander are certified for use in explosive area Zone 0 (Class I, Div I)
- Stainless steel body ensures safety in the harshest environments
- IP67 rated and resistant against corrosive environments
- Wireless and automatic operation eliminates the need for cables and manual inspections in challenging conditions

## Edge computing: empowering real-time insights

- Conduct data analysis directly next to the machines, enhancing reliability and repeatability of results
- Calculation of vibratory levels, including velocity, acceleration, temperature, and peak to peak measurements, all done at the edge for real-time insights.

## The smart sensor advantage

- Enhance reliability and repeatability
- Averaged spectra embedded in the sensor for data analysis and accuracy
- Accurex automatic diagnostic AI, providing intelligent insights for smarter analysis.

## Effortless maintenance: prolonged sensor performance

- Long-lasting operation with the replaceable battery, providing up to 5 years of reliable service
- Simplify maintenance and extend sensor life with a user-replaceable, cost-effective standard battery.



# A new environment of possibilities bringing all your assets in one ecosystem

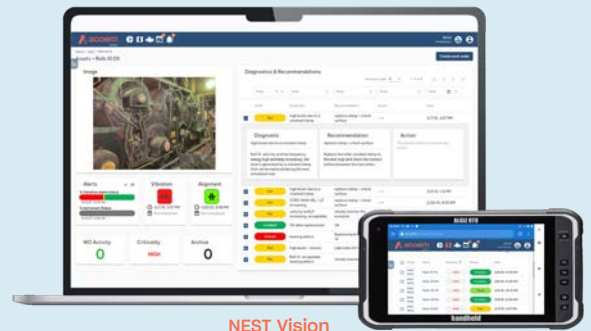
To gain comprehensive insights into the reliability of your rotating equipment, you have depended on various diagnostic tools such as Portable and Real-time devices, along with multiple sensors. This complex approach makes it challenging to anticipate machine health issues and promptly address them.

Acoem understands your need to take control of your machinery and to be able to share information with relevant team members. Nest ecosystem is a customisable solution that simplifies the process and provides you with all the relevant information you need to proactively identify maintenance requirements and make smarter, more confident collective decisions.

## Simplify your decision making process

- Manage all of your machines in one place
- Shorten the time between decision and action that can improve your plant performance
- Easily get remote support from remote Acoem Advisors whenever you need it.
- 24/7 access to actionable data.

*The NEST Ecosystem enables effortless management and monitoring of diverse machines through a unified interface. NEST integrates various diagnostic solutions, including online, portable, alignment, and more, to centralize all asset information. Easily adapt monitoring based on criticality and strategies, saving time while maximizing reliability.*



NEST Vision



**Advisor diagnostic services**  
An individually tailored, custom-designed condition-based maintenance program





## Unleash the power of actionable data with Accurex™ AI-driven solution

Experience a new level of industrial performance with Accurex's innovative AI-driven diagnostic solution. Accurex has a proven track record, managing 80% of machines and defects in various industries, including electric motors, pumps, fans, compressors, gearboxes, rollers and shafts.

With its unique AI technology, Accurex provides users with confidence in the information it delivers. It makes machinery diagnostics accessible to every maintenance user, with diagnostic rules determined automatically, just by providing a simple machine description through its intuitive interface. In just a few seconds, you will

receive accurate measurements, displayed in a traffic light colour-coded format, showing the performance and health of each machine.



No action required









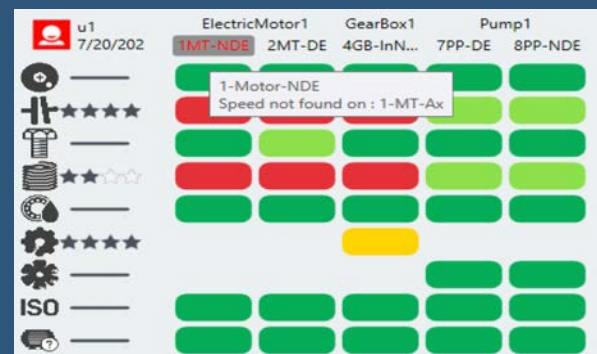
Monitoring required and/or action conceivable during scheduled shutdown



Action to be scheduled as soon as possible

### Faults managed by Acoem Accurex™

-  Bearing / lubrication
-  Unbalance
-  Misalignment
-  Structural resonance
-  Pump cavitation
-  Gear wear
-  Shocks/modulation resulting from looseness or electrical defects
-  Other ISO defects (soft foot, belt wear, nearby disturbance)
-  Suspicious machine



# 99%\*

of assets in critical condition are accurately detected

\* based on millions of data sets reviewed by experts

## About Acoem

At Acoem, we **create environments of possibility** – helping organisations find the right balance between progress and preservation – safeguarding businesses and assets, and maximising opportunities while conserving the planet’s resources. We deliver unrivalled, interoperable AI-powered sensors and ecosystems that empower our customers to make enlightened decisions based on accurate information.

Together with 220 distributors, our 850+ employees work across 28 offices, 6 manufacturing facilities and 5 R&D centres in 9 countries, to provide trusted, holistic data solutions for customers worldwide.

**Acoem links possibilities with protection.**

For more information visit [acoem.com](https://acoem.com)

