

Acoem AT-400

Dual Precision
at Every Turn



2023-09-06 21:12 CEST

Acoem AT-400 Shaft Alignment System - Dual Precision at Every Turn |

Dual precision at every turn – introducing the new,
premium Acoem AT-400 shaft alignment solution

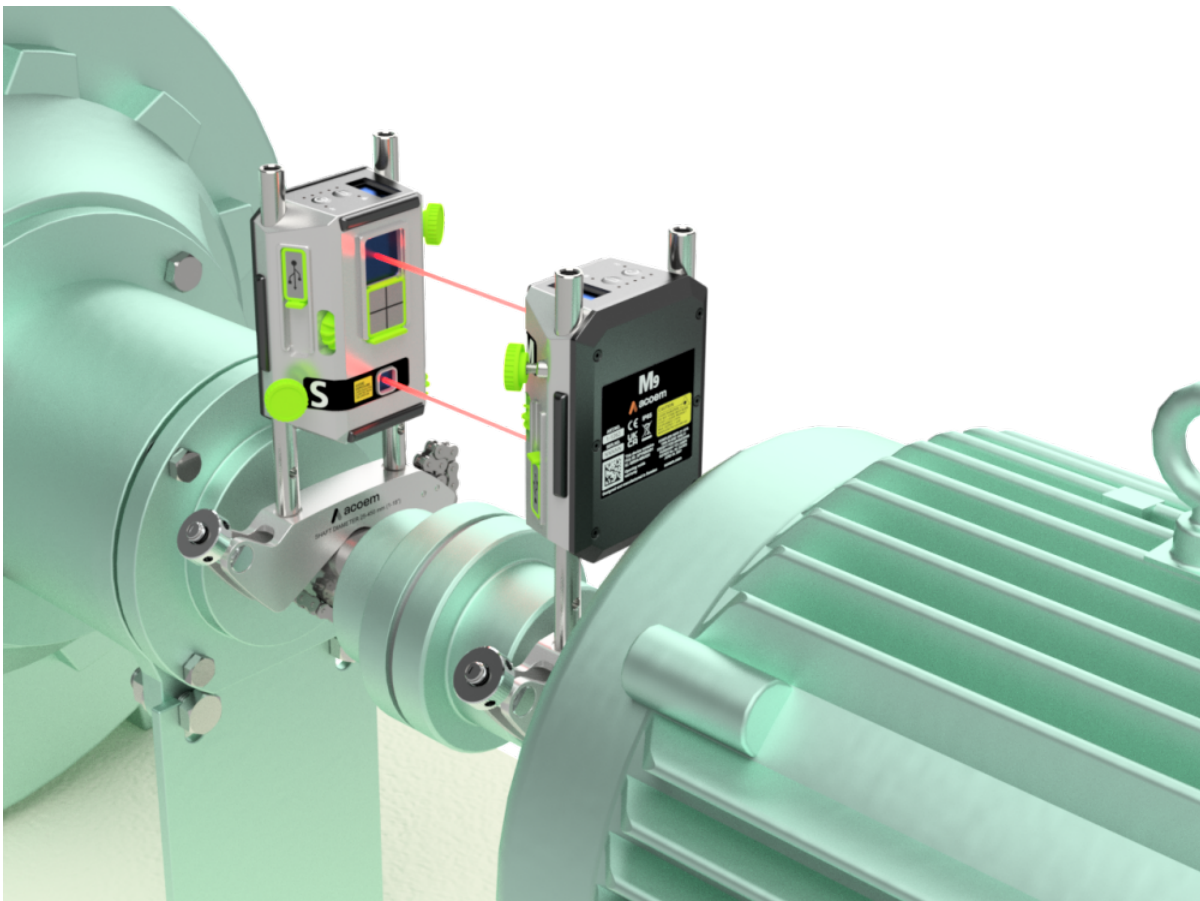
- Newest addition to Acoem's suite of precision alignment solution
- Unmatched flexibility and accuracy with Dual Sweep method™
- Leveraging cloud connectivity with the next generation 3D user interface
- Lifetime warranty as a continuous commitment to quality ☒

Acoem Sweden-September 6.

Acoem, pioneers in the field of condition monitoring and shaft alignment, is proud to announce the newest addition to its suite of precision solutions. The Acoem AT-400 represents a significant advancement in technology and sets a new standard in accuracy and adaptability. Equipped with resilient dual-axis sensors and unmatched versatility, the Acoem AT-400 – combined with Acoem’s exceptional technical support and global presence – will revolutionise the way shaft alignment is performed and elevate operational efficiency for a wide range of industries.

Unmatched flexibility and accuracy with Dual Sweep method

The Acoem AT-400 tackles even the most complex shaft alignment scenarios where accessibility might be a challenge or manual rotation is not feasible. One of its standout capabilities is the Dual Sweep method, which automates measurement recording during a sweep of the shafts. This approach ensures unparalleled accuracy by capturing numerous data points, allowing for precise alignment assessment on coupled machines.



In addition to the Dual Sweep method, the Acoem AT-400 offers a range of

measurement methods designed to address diverse alignment challenges. From the Dual Sweep Express method – which halts data recording automatically upon shaft rotation cessation – to the Dual Multipoint and Tripoint methods for optimal calculations on various types of shafts, the Acoem AT-400 provides unmatched flexibility in alignment assessment. In Live Move mode, adjustments can be carried out simultaneously in horizontal and vertical directions, regardless of the sensor's orientation.

The Acoem AT-400's M9 & S9 dual-axis sensors are position-sensitive detectors that redefine measurement accuracy with their high resolution of 0.001mm. Thoughtfully designed to be the thinnest 2-axis sensors on the market, they are lightweight and feature a remarkable 20-metre (65 feet) measurement range. Their sliding covers and charging ports ensure protection during storage, further emphasising Acoem's commitment to product durability.

Leveraging cloud connectivity with the next generation 3D shaft alignment user interface

A standout feature of the Acoem AT-400 is GuideU™ – a next-generation 3D shaft alignment graphical user interface. This patented, customisable system simplifies the alignment process with intuitive icons, colour-coded displays and animated help screens that literally guide you through the entire process with ease.

With cloud connectivity users can upload alignment reports to the Acoem proprietary Webportal effortlessly. This feature elevates data management and provides easy access to alignment records for analysis and comparison. Technicians can conveniently send alignment reports directly to the portal, making the documentation process seamless.

While the Acoem AT-400 is well-suited for diagnosing alignment issues across all machinery types, its true potential shines in demanding scenarios such as energy generation turbines, compressors, cooling towers, maritime equipment, situations involving non-rotatable shafts and complex machine train setups, often found in heavy industrial environments such as oil and gas, paper processing and mining.



[Se YouTube-videon här](#)

Kontaktpersoner



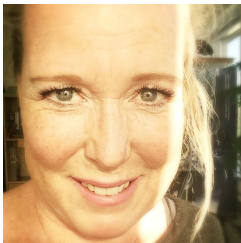
Hans Svensson

Presskontakt

CEO

hans.svensson@acoem.com

+46 31 706 28 00



Ulrika Rafstedt

Presskontakt

Marketing Communication

ulrika.rafstedt@acoem.com

+46 31 702 225690